

## Yacht Racing Union of the Great Lakes



### Richardson Trophy Regatta

Buffalo Yacht Club, Buffalo, New York, USA

September 30 and October 1, 2006

### SAILING INSTRUCTIONS

#### 1) RULES

- a) The event will be governed by the 'rules' as defined in the 2004-2008 Racing Rules of Sailing (RRS) including Appendix C, the Notice of Race (NOR) as amended, and these Sailing Instructions. The Organizing Authority (OA) is the Buffalo Yacht Club in conjunction with the Yacht Racing Union of the Great Lakes (YRUGL) and the Inter-Lake Yachting Association (I-LYA).
- b) Add to RRS 42: The use of the shrouds (including any inner shrouds) to facilitate tacking or gybing, or to aid the projection of a crew member outboard is prohibited.
- c) Add to RRS C8.4: When the match umpires, and at least one other umpire decide that a boat has broken RRS 14 and damage results, they may, without a hearing, impose a scoring penalty of half of one point. A competitor who is so penalized will be informed as soon as practical and may request a hearing. The protest committee (PC) will then proceed in accordance with RRS C6.6. The penalty, if any, decided by the protest committee may be more than the scoring penalty of half of one point. When the umpires decide that a penalty greater than the scoring penalty of half of one point would be appropriate they shall act in accordance with RRS C8.4.
- d) J/22 Class Rules shall not apply to this event.

#### 2) ENTRIES AND ELIGIBILITY

- a) Only skippers and crew invited by the Organizing Authority (OA) in accordance with the NOR are eligible for the event.
- b) The skipper must be a member of a club or organization of which that club is also a member of the association of which he or she represents.
- c) After the warning signal for a match, the registered skipper shall not leave the helm, except in an emergency.
- d) When a registered skipper is unable to continue in the event, the OA may authorize an original crew member to substitute.
- e) When a registered crewmember is unable to continue in the event, the OA may authorize a substitute, a temporary substitute or other adjustment.

- f) All competitors shall supply their own Personal Floatation Devices and each team shall supply their own hand held radio.

### **3) COMMUNICATIONS WITH COMPETITORS**

- a) Notices to competitors will be posted on the official notice board located at the Buffalo Yacht Club (BYC) Clubhouse, Foot of Porter Avenue, Buffalo.
- b) Signals made ashore will be displayed from the Regatta Flag Pole located at the Buffalo Basin.
- c) Skippers must attend the first briefing, which will be held at the BYC Clubhouse, Foot of Porter Avenue, Buffalo on Friday, September 29 at 1930 hours, unless excused by the OA.
- d) The first meeting with the umpires will be held at the BYC Clubhouse, Foot of Porter Avenue on Friday, September 29 at 1900 hours.
- e) A skippers briefing will be held at the BYC Clubhouse, Foot of Porter Avenue on Saturday September 30 at 0730 hours.
- f) A skippers briefing will be held at the BYC Clubhouse, Foot of Porter Avenue on Sunday, October 1 at 0730 hours.

### **4) AMENDMENTS TO SAILING INSTRUCTIONS**

- a) Amendment to these Sailing Instructions made ashore will be posted at least one (1) hour before the start of the first race of the day and will be signed by the BYC Fleet Captain.
- b) Amendments to the Sailing Instructions made afloat will be signalled by the display, on the course committee boat of code flag "L" with three sound signals. An umpire may communicate these either verbally or in writing.

### **5) BOATS AND SAILS**

- a) The event will be sailed in J/22's.
- b) Boats will be inspected by the OA or the Race Committee to assure equality of condition, rigging, gear, equipment and sails.
- c) While all reasonable steps are taken to equalize the boats, variations will not be grounds for redress. (This changes RRS 62).
- d) Other restrictions or instructions may be given to the boats verbally by an umpire.

### **6) IDENTIFICATION AND ASSIGNMENT OF BOATS**

Boats and starting ends for the first race will be drawn at the Friday evening skipper's meeting.

### **7) CREW MEMBERS, NUMBER AND WEIGHT**

- a) A team will be composed of any number of individuals as long as the total crew weight excluding clothing does not exceed 606 pounds (274.88 kg.)
- b) Teams will be weighed upon check-in on Friday at the BYC and that weighing will govern for the event.

### **8) EVENT FORMAT AND STARTING SCHEDULES**

The format of the event will be as follows:

- a) For the first day of sailing, the entering teams will be seeded onto two courses based on a random drawing which will determine the course, the starting position and the entry side for that competitor.
- b) At the completion of the first day of racing the three top teams from each course will be brought together and a random drawing will be held to determine the entry side and race sequence for this group. This will be the Gold Group which will determine places 1 through 6.
- c) At the completion of the first day of racing the bottom three teams from each course will be brought together and a random drawing will be held to determine the entry side and race sequence for this group. This will be the Silver Group which will determine places 7 through 12.

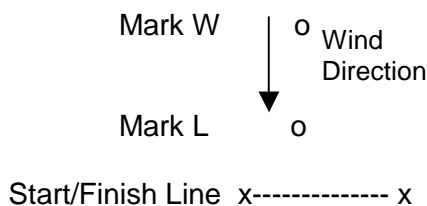
- d) Points from Saturday will not carry forward to Sunday to determine the final position in the competition.
- e) The teams on each course will be rotated through the boats based on the schedule shown in appendix C.
- f) The racing days are scheduled as Saturday and Sunday. Start time of the first race each day will be 9:00 AM with the Attention signal and Flag F at 8:50 AM.
- g) The RC may terminate any series or the event when, in its opinion, it is impractical to attempt to hold the remainder of matches under the existing conditions or in the remaining time scheduled. A race may be postponed or terminated if the average wind velocity exceeds eighteen (18) knots. The foregoing shall not be grounds for redress under RRS 62.
- h) Replace final sentence of RRS C11.3 (a) with. When the RC decides that a sail off is not practical, the tie shall be decided in favour of the competitor who has the highest score in the round robin after eliminating the score for the first race for each tied skipper or, should this fail to break the tie, the second race for each tied skipper and so on until the tie is broken.

**9) RACING AREA**

- a) Should the weather allow, the racing area for both days will be in the vicinity of the north entrance to the Buffalo Harbor, Buffalo New York in the US or Canadian waters of Lake Erie. The two courses will be separated by approximately .75 of a mile.
- b) In the event of inclement weather, one course will be sailed off of Erie Basin Marina and one course will be sailed toward the south end of Buffalo harbor. See Appendix D for Course Locations

**10) COURSE**

Course Configuration (not to scale)



**11) COURSE SIGNALS AND COURSE TO BE SAILED**

Course signals will be displayed from the RC boat, at or before the warning signal.  
 Marks W and L shall be rounded to Starboard

<u>Signal</u>	<u>Course</u>
No Signal	Start - W - L - W – Finish
Code Flag “S”	Start - W – Finish

**12) DESCRIPTION OF MARKS AND COMMITTEE BOAT**

- a) All marks will be inflatable type marks.
- b) The Start/Finish mark will be an inflatable tripod or a (3') three foot tomato with a black horizontal band.
- c) The starting/finishing line will be between the course side of the starting/finishing mark and the hoist for an orange flag flown on the RC boat.
- d) A buoy may be attached to the RC boat anchor line just below keel depth. Boats shall not pass between this buoy and the RC boat at any time. This buoy is part of the RC boat ground tackle.

**13) ABANDONMENT AND SHORTENING**

RRS 32 is deleted and replaced with: “The Race Committee may abandon or shorten any match

at any time for any reason”.

#### 14) BREAKDOWN AND TIME FOR REPAIRS

- a) Before the attention signal of a flight or within two (2) minutes of finishing, whichever is later, a boat may display a green flag to signal breakdown or damage to the boat, her sails or injury to her crew and request a delay to the next start. She shall proceed as soon as possible to a position as close to leeward of the RC boat and remain there, unless otherwise directed.
- b) The time allowed for repairs shall be at the discretion of the RC.

#### 15) STARTING PROCEDURE

The following table changes RRS C 3.1.

Time (min.)	Signals	Meanings
15	Flag F – with Sound	Attention signal
11	Flag F lowered – no sound	
10	Raise Numeral Pennant 1 – with sound	Warning signal Match 1
9	Raise Flag P - with one sound	Preparatory Signal Match 1
7	Blue or Yellow Flag or both with one sound (only if a boat has not entered)	End of pre-start entry time for Match 1
5	Lower Flag P and Numeral Pennant 1. Raise Numeral Pennant 2 with sound	START of Match 1 Warning signal for Match 2
4	Raise Flag P – with one sound	Preparatory Signal Match 2
2	Blue or Yellow flag or both with one sound (only if a boat has not entered)	End of pre-start entry time for Match 2
0	Lower Flag P and Numeral Pennant 2	START of Match 2

#### 16) CHANGE OF COURSE AFTER THE START

A change of course will only be signaled while the original mark is in place.

**17) TIME LIMIT** A boat that does not finish within 5 minutes after her opponent has completed the course and finished will be scored DNF. [This changes RRS 35 and A5]

#### 18) PRIZES

- a) The prize for first place will be the YRUGL Richardson Trophy.
- b) Prizes have been approved by the National Authority.
- c) ISAF have been notified of the Prize.

#### 19) DISCLAIMER

All those taking part in the event do so at their own risk. The OA, its members, associates and appointees accept no responsibility for any loss, damage, injury or inconvenience incurred, howsoever caused.

## APPENDIX A - HANDLING THE BOATS

### 1) PROHIBITED ITEMS and ACTIONS

- a) Except in an emergency or in order to prevent damage or injury, or when directed by an umpire otherwise, the following are prohibited:
  - i) Any additions, omissions or alterations to the equipment supplied.
- b) Sailing the boat in a manner that it is reasonable to predict that significant further damage would result.
- c) Perforating sails, even to attach tell tales.
- d) Adjusting or altering the tension of standing rigging, excluding the backstay.
- e) Using a winch to adjust the mainsheet, backstay or vang.
- f) The use of electronic instruments other than compass and watches.
- g) Marking directly on the hull or deck with permanent ink.
- h) After the starting signal and while sailing close hauled for more than a few seconds, the main boom position shall be controlled only by using the mainsheet, traveler, and the vang.
- i) Use of VHF radios while racing.

### 2) PERMITTED ITEMS and ACTIONS

The following are permitted:

- a) Taking on board the following equipment:
  - i) basic hand tools
  - ii) adhesive tape
  - iii) line (elastic or otherwise of 4 mm diameter or less)
  - iv) marking pens
  - v) tell tale material
  - vi) watch, timers and hand held compass
  - vii) shackles and clevis pins
  - viii) velcro tape
- b) Changing the number of mainsheet purchases to less than 8:1 (Modified 060929 1900 hours)

## APPENDIX B - EQUIPMENT LIST

The following items will be provided. Any loss shall be reported at the first opportunity.

- a) Mainsail and set of battens
- b) Headsail
- c) Spinnaker
- d) One winch handle
- e) Two spinnaker sheets with tweekers
- f) Two headsail sheets
- g) Tiller extension
- h) Anchor and Anchor Line
- i) Dock Lines
- j) Two Fenders

# YRUGL Richardson Trophy Regatta Sailing Instructions

## Appendix C Rotation Table for Saturday

*Rotation for Matches on course Nirvana*

Boat Identifier →	<b>RACES</b>				Teams Sitting Out	
	1	2	3	4	Team Holding Boat 1	Team Holding Boat 2
	<b>Sail #1</b>	<b>Sail #2</b>	<b>Sail #3</b>	<b>Sail #4</b>		
FLIGHT 1	1	2	3	4	5	6
FLIGHT 2	2	3	4	5	1	6
FLIGHT 3	5	6	1	3	2	4
FLIGHT 4			6	1		
FLIGHT 5	2	4	3	5	1	6
FLIGHT 6	3	6	4	1	2	5
FLIGHT 7	1	5	2	6	3	4
FLIGHT 8	6	4	5	2	1	3

Number of Port Starts for Team 1	3
Number of Starboard Starts for Team 1	2
Number of Port Starts for Team 2	3
Number of Starboard Starts for Team 2	2
Number of Port Starts for Team 3	3
Number of Starboard Starts for Team 3	2
Number of Port Starts for Team 4	2
Number of Starboard Starts for Team 4	3
Number of Port Starts for Team 5	2
Number of Starboard Starts for Team 5	3
Number of Port Starts for Team 6	2
Number of Starboard Starts for Team 6	3

## Appendix C Rotation Table for Saturday

*Rotation for Matches on Course Big Kahuna*

Boat Identifier →	RACES				Teams Sitting Out	
	1 Sail #5	Sail #6	2 Sail #7	Sail #8	Team Holding Boat 1	Team Holding Boat 2
FLIGHT 1	7	8	9	10	11	12
FLIGHT 2	8	9	10	11	7	12
FLIGHT 3	11	12	7	9	8	10
FLIGHT 4			12	7		
FLIGHT 5	8	10	9	11	7	12
FLIGHT 6	9	12	10	7	8	11
FLIGHT 7	7	11	8	12	9	10
FLIGHT 8	12	10	11	8	7	9
Number of Port Starts for 7			3			
Number of Starboard Starts for 7			2			
Number of Port Starts for 8			3			
Number of Starboard Starts for 8			2			
Number of Port Starts for 9			3			
Number of Starboard Starts for 9			2			
Number of Port Starts for 10			2			
Number of Starboard Starts for 10			3			
Number of Port Starts for 11			2			
Number of Starboard Starts for 11			3			
Number of Port Starts for 12			2			
Number of Starboard Starts for 12			3			

# YRUGL Richardson Trophy Regatta Sailing Instructions

## Appendix C Rotation Table for Sunday

### Rotation for Matches On Gold Medal Course

Boat Identifier →	<b>RACES</b>				Teams Sitting Out	
	1	2	3	4	Team Holding Boat 1	Team Holding Boat 2
	<b>Sail #1</b>	<b>Sail #2</b>	<b>Sail #3</b>	<b>Sail #4</b>		
FLIGHT 1	1	2	3	4	5	6
FLIGHT 2	2	3	4	5	1	6
FLIGHT 3	5	6	1	3	2	4
FLIGHT 4			6	1		
FLIGHT 5	2	4	3	5	1	6
FLIGHT 6	3	6	4	1	2	5
FLIGHT 7	1	5	2	6	3	4
FLIGHT 8	6	4	5	2	1	3

Number of Port Starts for Team 1	3
Number of Starboard Starts for Team 1	2
Number of Port Starts for Team 2	3
Number of Starboard Starts for Team 2	2
Number of Port Starts for Team 3	3
Number of Starboard Starts for Team 3	2
Number of Port Starts for Team 4	2
Number of Starboard Starts for Team 4	3
Number of Port Starts for Team 5	2
Number of Starboard Starts for Team 5	3
Number of Port Starts for Team 6	2
Number of Starboard Starts for Team 6	3



## Appendix C Rotation Table for Sunday

*Rotation for Matches on Silver Medal Course*

Boat Identifier →	RACES				Teams Sitting Out	
	1 Sail #5	1 Sail #6	2 Sail #7	2 Sail #8	Team Holding Boat 1	Team Holding Boat 2
FLIGHT 1	7	8	9	10	11	12
FLIGHT 2	8	9	10	11	7	12
FLIGHT 3	11	12	7	9	8	10
FLIGHT 4			12	7		
FLIGHT 5	8	10	9	11	7	12
FLIGHT 6	9	12	10	7	8	11
FLIGHT 7	7	11	8	12	9	10
FLIGHT 8	12	10	11	8	7	9
Number of Port Starts for Team 7			3			
Number of Starboard Starts for Team 7			2			
Number of Port Starts for Team 8			3			
Number of Starboard Starts for Team 8			2			
Number of Port Starts for Team 9			3			
Number of Starboard Starts for Team 9			2			
Number of Port Starts for Team 10			2			
Number of Starboard Starts for Team 10			3			
Number of Port Starts for Team 11			2			
Number of Starboard Starts for Team 11			3			
Number of Port Starts for Team 12			2			
Number of Starboard Starts for Team 12			3			

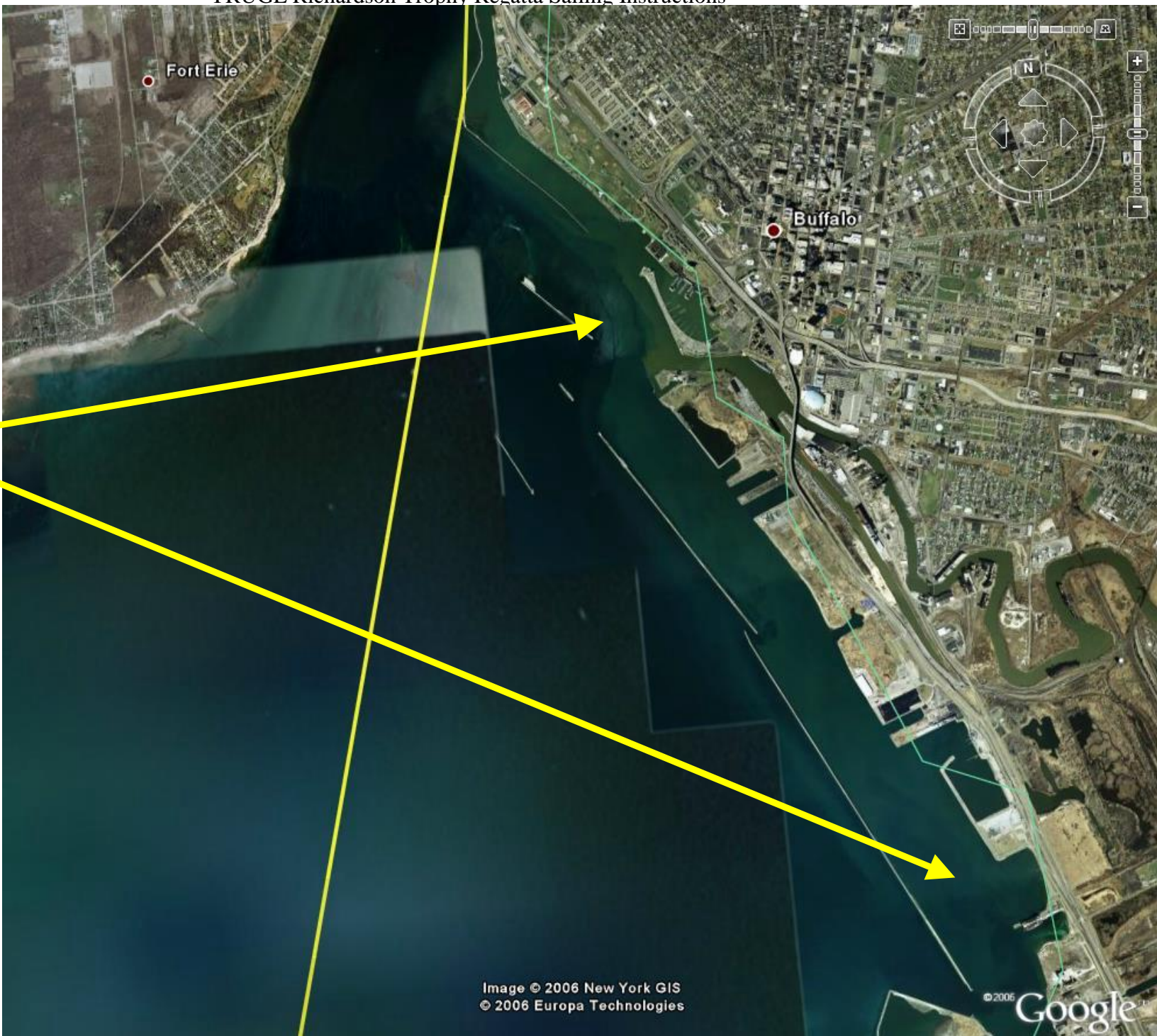
YRUGL Richardson Trophy Regatta Sailing Instructions

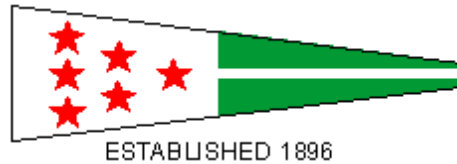
Main  
Course  
Area



YRUGL Richardson Trophy Regatta Sailing Instructions

**Alternate  
Courses  
Areas  
For  
Inclement  
Weather**





## Yacht Racing Union of the Great Lakes

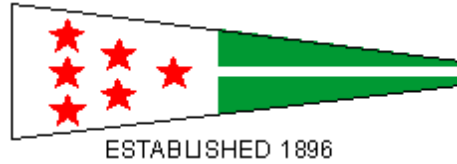


### Richardson Trophy Regatta Sailing Instruction Amendment 9/30/06

- c) The sailing instructions are amended by deleting Sections 8a, b, c & d and replacing with:
- i) 8a) For the first round robin of sailing, the entering teams will be seeded onto two courses based on a random drawing which will determine the course, the starting position and the entry side for that competitor.
  - ii) 8b) At the completion of the first round robin the top team from each course round robin will race a first to win two points final series.
  - iii) 8c) No attention signal will be made after 1400 hours on Sunday October 1, 2006.
- d) The sailing instructions are amended by adding to Sailing Instruction 15:

There will be no blank start in a flight with only one match.

YRUGL Richardson Trophy Regatta Sailing Instructions



Yacht Racing Union of the Great Lakes



Richardson Trophy Regatta  
Sailing Instruction Amendment 2  
9/30/06

Change to Appendix C for Big Kahuna Course

The Course Schedule is amended to read:

*Rotation for Matches on Course Big Kahuna*

Boat Identifier	RACES				Teams Sitting Out	
	1		2		Team Holding Boat 1	Team Holding Boat 2
	Sail #5	Sail #6	Sail #7	Sail #8		
FLIGHT 1 Completed 9/30	7	8	9	10	11	12
FLIGHT 2 Completed 9/30	8	9	10	11	7	12
FLIGHT 3 Completed 9/30	11	12	7	9	8	10
FLIGHT 4 Modified	8	10	<b>12</b>	<b>7</b>	9	
FLIGHT 5 Modified	10	7	9	12	8	
FLIGHT 6 Modified	8	12			10	
FLIGHT 7 Modified	12	10				
FLIGHT 8 Deleted						
	Port Blue	Starboard Yellow	Port Blue	Starboard Yellow		

## YRUGL Richardson Trophy Regatta Sailing Instructions



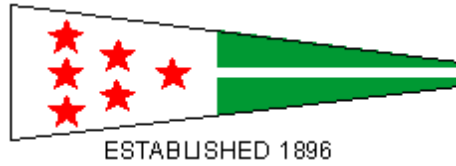
## Yacht Racing Union of the Great Lakes



### Richardson Trophy Regatta Sailing Instruction Amendment 3 9/30/06

- e) The sailing instructions are amended by deleting Sections 8b & c of the first amendment and replacing with:
- i) 8b)i) If the first round robin completes by 1230 on Sunday October 1, 2006 a first to win two points semi final series will be held amongst the top two teams from each course of the round robin. A random draw will be held to determine the pairing, entry side and race sequence of this group.
  - ii) 8b)ii) If the first round robin completes after 1230 on Sunday October 1, 2006 a first to win one point semi final series will be held amongst the top two teams from each course of the round robin. A random draw will be held to determine the pairing, entry side and race sequence of this group.
  - iii) 8c)i) If the semi finals completes by 1400 on Sunday October 1, 2006 a first to win two points final series will be held amongst the winners of the semi-finals. A random draw will be held to determine entry side and boats.
  - iv) 8c)ii) If the semi finals completes after 1400 on Sunday October 1, 2006 a first to win one point final series will be held amongst the winners of the semi-finals. A random draw will be held to determine entry side and boats.
  - v) 8d) No attention signal will be made after 1400 hours on Sunday October 1, 2006.

YRUGL Richardson Trophy Regatta Sailing Instructions



Yacht Racing Union of the Great Lakes



Richardson Trophy Regatta  
Sailing Instruction Amendment 4  
9/30/06  
Change to Appendix C for Nirvana Course

Flight 4 will be sailed after the completion of flight 8

YRUGL Richardson Trophy Regatta Sailing Instructions



Yacht Racing Union of the Great Lakes



Richardson Trophy Regatta  
Sailing Instruction Amendment 4 A  
Revision Date 10/01/06  
Change to Appendix C for Nirvana Course

Flight 4 will be sailed after the completion of flight 8. The Course Schedule is amended to read

*Rotation for Matches on course Nirvana*

Boat Identifier →	RACES				Teams Sitting Out	
	1	2	3	4	Team Holding Boat 1	Team Holding Boat 2
	Sail #1	Sail #2	Sail #3	Sail #4		
FLIGHT 1 Completed 9/30	1	2	3	4	5	6
FLIGHT 2 Completed 9/30	2	3	4	5	1	6
FLIGHT 3 Completed 9/30	5	6	1	3	2	4
FLIGHT 4	2	4	3	5	1	6
FLIGHT 5	3	6	4	1	2	5
FLIGHT 6	1	5	2	6	3	4
FLIGHT 7	6	4	5	2	1	3
FLIGHT 8	6	1				
	Port Blue	Starboard Yellow	Port Blue	Starboard Yellow		



YRUGL Richardson Trophy Regatta Sailing Instructions



Yacht Racing Union of the Great Lakes



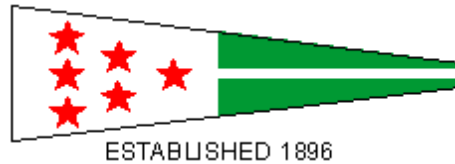
Richardson Trophy Regatta  
Sailing Instruction Amendment 4A Revision 1  
Revision Date 10/01/06  
Change to Appendix C for Nirvana Course

The Course Schedule has been amended to read as follows.

*Rotation for Matches on course Nirvana*

Boat Identifier	RACES				Teams Sitting Out	
	1	2	3	4	Team Holding Boat 1	Team Holding Boat 2
→	Sail #1	Sail #2	Sail #3	Sail #4		
FLIGHT 1 Completed 9/30	1	2	3	4	5	6
FLIGHT 2 Completed 9/30	2	3	4	5	1	6
FLIGHT 3 Completed 9/30	5	6	1	3	2	4
FLIGHT 4	2	4	3	5	1	6
FLIGHT 5	3	6	4	1	2	5
FLIGHT 6	1	5	2	6	3	4
FLIGHT 7	6	4	5	2	1	3
FLIGHT 8	6	1				
	Port Blue	Starboard Yellow	Port Blue	Starboard Yellow		

YRUGL Richardson Trophy Regatta Sailing Instructions



Yacht Racing Union of the Great Lakes



Richardson Trophy Regatta  
Sailing Instruction Amendment 4A Revision 2  
Revision Date 10/01/06  
Change to Appendix C for Nirvana Course

The Course Schedule has been amended to read as follows.

*Rotation for Matches on course Nirvana*

Boat Identifier →	RACES				Teams Sitting Out	
	1	2	3	4	Team Holding Boat 1	Team Holding Boat 2
	Sail #1	Sail #2	Sail #3	Sail #4		
FLIGHT 1 Completed 9/30	1	2	3	4	5	6
FLIGHT 2 Completed 9/30	2	3	4	5	1	6
FLIGHT 3 Completed 9/30	5	6	1	3	2	4
FLIGHT 4 Modified 10/1	2	4	3	5	1	6
FLIGHT 5 Modified 10/1	3	6	4	1	2	5
FLIGHT 6 Modified 10/1	1	5	2	6	3	4
FLIGHT 7 Modified 10/1	6	4	5	2	1	3
FLIGHT 8 Modified 10/1	6	1				
	Port Blue	Starboard Yellow	Port Blue	Starboard Yellow		

YRUGL Richardson Trophy Regatta Sailing Instructions



Yacht Racing Union of the Great Lakes



Nirvana Course Results																				
Boat Change Monitors VHF-79																				
Team #	Skipper	Sailing Colors	F 1 R 1	F 1 R 2	F 2 R 1	F 2 R 2	F 3 R 1	F 3 R 2	Sat Total	F 4 R 1	F 4 R 2	F 5 R 1	F 5 R 2	F 6 R 1	F 6 R 2	F 7 R 1	F 7 R 2	F 8 R 1	Sun Total	Total
1	Wilson	Red over Black	Ret					0	0				1	0				0	1	1
2	Hollerbach	Green over Red	1		0				1	1					0		0		1	2
3	Gulari	Yellow over Black		1	1			1	3		1	0							1	4
4	Kinney	Blue over Yellow		0	Ret	Ret			0	0			0			0				0
5	K. Doyle	Red over Yellow				1	1		2		-0.5			1			1		1.5	3.5
6	Hansen	Blue over Red					0		0			1			1	1		1	4	4

YRUGL Richardson Trophy Regatta Sailing Instructions



Yacht Racing Union of the Great Lakes



Team Wells withdrew from Competition by e-mail on 9/28/06 at 12:31 pm.

Big Kahuna Course																			
Boat Change Monitor VHF-71																			
Team #	Skipper	Sailing Colors	F 1 R 1	F 1 R 2	F 2 R 1	F 2 R 2	F 3 R 1	F 3 R 2	Sat Tota l	F 4 R 1	F 4 R 2	F 5 R 1	F 5 R 2	F 6 R 1		F 7 R 1		Sun Total	Total
7	Jordan	Solid Blue	0					0	0		0	0						0	0
8	Burns	Solid Black	1		1				2	1				1				2	4
9	Lowery	Yellow over Green		1	0			1	2				0					0	2
10	Vigrass	Black over Blue		0		By e			0	0		1				0		1	1
11	Wells	Solid Yellow				D N A	D N A		DN A	D N A	D N A	D N A	DN A	DN A		DN A		DNA	DNA
12	Van Tol	Green over Blue					By e		NA		1		1	0		1		3	3

# YRUGL Richardson Trophy Regatta Sailing Instructions



## Yacht Racing Union of the Great Lakes



## Semi Final Series Results

Team Name	Race 1	Sail No	Port / Starboard	Race 2	Sail No.	Port / Starboard	Race 3	Sail No	Port / Starboard	Total
Gulari	0	1	Port	0	2	Starboard	NA	1	Port	0
Van Tol	1	2	Starboard	1	1	Port	NA	2	Starboard	2
Burns	1	7	Port	0	8	Starboard	1	7	Port	2
Hansen	0	8	Starboard	1	7	Port	0	8	Starboard	1



ESTABLISHED 1896

## Yacht Racing Union of the Great Lakes



Buffalo Yacht Club  
Founded 1860



Inter Lake  
Yachting Association  
Established 1885

## Final Series Results

Team Name	Race 1	Sail No	Port / Starboard	Total
Van Tol	0	1	Port	0
Burns	1	2	Starboard	1

### Richardson Trophy Winner:

Richardson Trophy 1<sup>st</sup> Place: Adam Burns  
Richardson Trophy 2<sup>nd</sup> Place: Chris Van Tol  
Richardson Trophy 3<sup>rd</sup> Place: Lars Hansen  
Richardson Trophy 4<sup>th</sup> Place: Boris Gulari